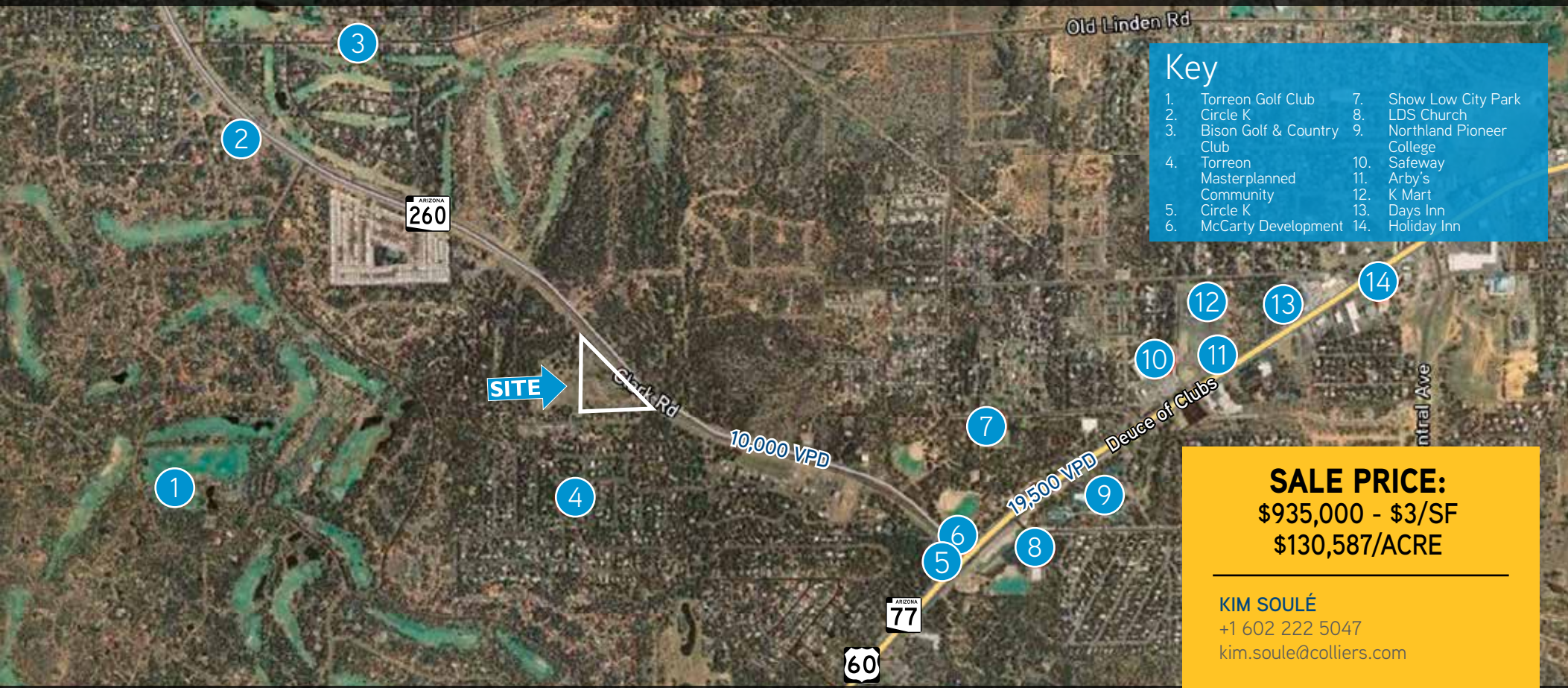


# FOR SALE > COMMERCIAL ZONED LAND

# SEC S. 26TH AVENUE & S. CLARK ROAD

SHOW LOW, AZ 85901



Key	
1. Torreon Golf Club	7. Show Low City Park
2. Circle K	8. LDS Church
3. Bison Golf & Country Club	9. Northland Pioneer College
4. Torreon Masterplanned Community	10. Safeway
5. Circle K	11. Arby's
6. McCarty Development	12. K Mart
	13. Days Inn
	14. Holiday Inn

**SALE PRICE:**  
**\$935,000 - \$3/SF**  
**\$130,587/ACRE**

---

**KIM SOULÉ**  
+1 602 222 5047  
kim.soule@colliers.com

**MIKE MONTOYA**  
+1 602 222 5157  
mike.montoya@colliers.com

**MATT FITZ-GERALD**  
+1 602 222 5178  
matt.fitz-gerald@colliers.com

COLLIERS INTERNATIONAL  
2390 E. Camelback Rd, Suite 100  
Phoenix, AZ 85016  
[www.colliers.com/greaterphoenix](http://www.colliers.com/greaterphoenix)

## Area

- ±7.16 gross acres or ±311,890 square feet and is somewhat triangular in shape. The parcel number is 309-37-023\*.

\*According to the Navajo County website

## Contact Assistance

- Economic Development – City of Show Low – Steve North
- Utilities – Navopache Electric
- Water – City of Show Low
- Telephone - Frontier

## Location

The property is located on the southeast corner of 26th Avenue and Clark Road (Highway 260)

## Features

- Clark Road Frontage (Highway 260)
- C-1\*\* Zoning (General Commercial) City of Show Low
- Located just north of the master planned community of Torreon

\*\*According to City of Show Low website



# FOR SALE > COMMERCIAL ZONED LAND



## FOR SALE > COMMERCIAL ZONED LAND SEC S. 26TH AVENUE & S. CLARK ROAD

SHOW LOW, AZ 85901



### Demographics

	1 mi Radius	3 mi Radius	5 mi Radius
<b>Population Trend</b>			
2000 Total Population	2,007	7,911	10,589
2010 Total Population	2,834	10,430	14,437
2013 Total Population	3,053	11,126	15,144
2018 Total Population	3,117	11,309	15,367

	1 mi Radius	3 mi Radius	5 mi Radius
<b>Population Change Trend</b>			
2000 to 2010 Population Change	41.2%	31.8%	36.3%
2000 to 2013 Population Change	52.1%	40.6%	43.0%
2010 to 2018 Population Change	10.0%	8.4%	6.4%
2013 to 2018 Population Change	2.1%	1.6%	1.5%

### Contact Us

**KIM SOULÉ**  
+1 602 222 5047  
kim.soule@colliers.com

**MIKE MONTOYA**  
+1 602 222 5157  
mike.montoya@colliers.com

**MATT FITZ-GERALD**  
+1 602 222 5178  
matt.fitz-gerald@colliers.com

**COLLIERS INTERNATIONAL**  
2390 E. Camelback Rd, Suite 100  
Phoenix, AZ 85016  
[www.colliers.com/greaterphoenix](http://www.colliers.com/greaterphoenix)

This document/email has been prepared by Colliers International for advertising and general information only. Colliers International makes no guarantees, representations or warranties of any kind, expressed or implied, regarding the information including, but not limited to, warranties of content, accuracy and reliability. Any interested party should undertake their own inquiries as to the accuracy of the information. Colliers International excludes unequivocally all inferred or implied terms, conditions and warranties arising out of this document and excludes all liability for loss and damages arising there from. This publication is the copyrighted property of Colliers International and/or its licensor(s). © 2017. All rights reserved.